



A Brand of The Fredericks Company

Application Note 3006 Resetting the MM200 Data Memory

Description

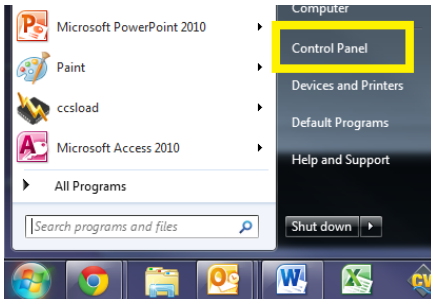
This document explains the process for resetting the MM200 data memory from a Windows 7 PC. The serial communications program Tera Term must be installed prior to following these instructions, and a serial to USB converter must be purchased. Note that this will reset all configurable features of the MM200 such as analog output and set point settings.

Instructions

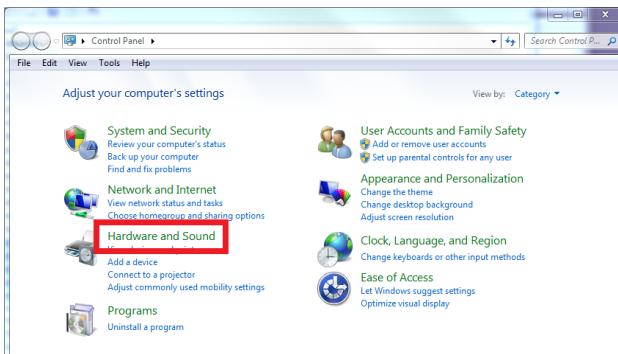
1. Plug the serial to USB converter into your PC.
2. Open the Start Menu.



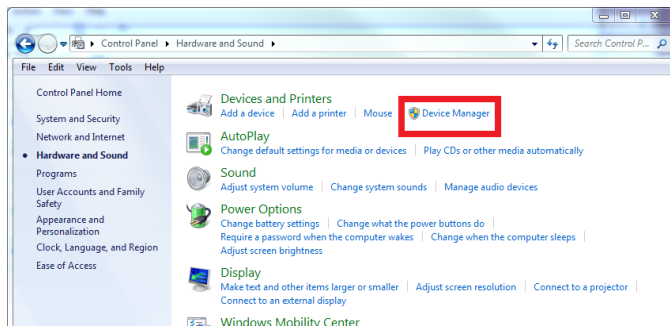
3. Open the Control Panel.



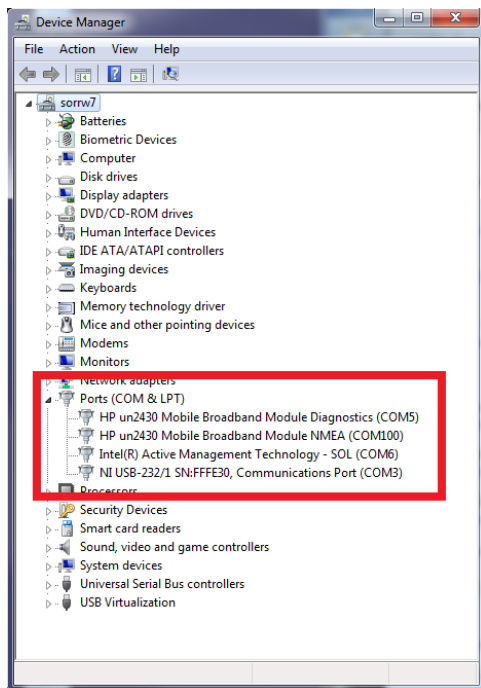
4. Open the Hardware and Sound.



5. Open the Device Manager.



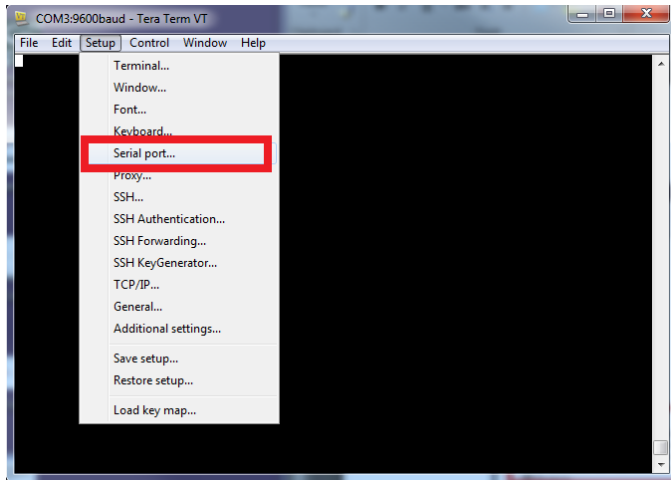
6. Expand the Ports (COM & LPT) drop down.



7. Determine the COM port assignment for your USB to serial converter, in this example the converter is assigned to COM3.

8. Open TeraTerm.

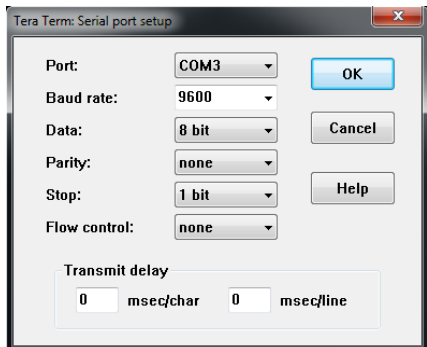
9. Open the Setup menu and select the Serial port... option.



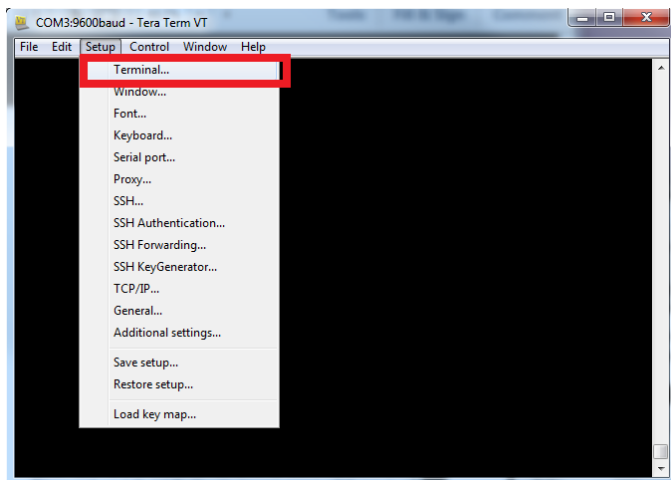
10. Change the Port setting to the COM port for your USB to serial converter, in this example it is COM3.

11. Ensure that the remainder of the settings are the following, then select OK:

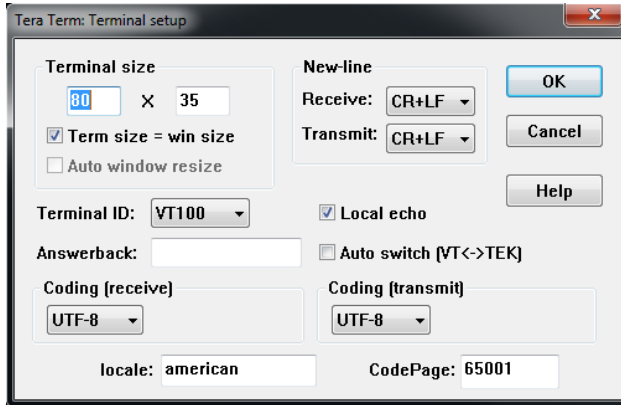
- a. Baud rate: 9600
- b. Data: 8 bit
- c. Parity: none
- d. Stop: 1 bit
- e. Flow control: none
- f. Transmit delay: 0 msec/char, 0 msec/line



12. Open the Setup menu and select the Terminal setup... option.



13. Ensure that the settings are the following, then select OK:
 - a. Receive: CR+LF
 - b. Transmit: CR+LF
 - c. Local echo checked



14. Send the following commands (<CR> is equivalent to pressing the Enter key):
 - a. D1<CR>
 - b. CF<CR>
 - c. PF<CR>
 - d. BF<CR>
 - e. CA3<CR>
 - f. SE<CR>

15. The memory has been reset and the MM200 should be functional. If you are still experiencing issues, please contact Televac.

Contact Us

Please feel free to contact us with any questions:

The Fredericks Company - Televac
2400 Philmont Avenue
Huntingdon Valley, PA 19004
Web: www.frederickscompany.com
Email: sales@frederickscompany.com
Phone: +1 215 947 2500